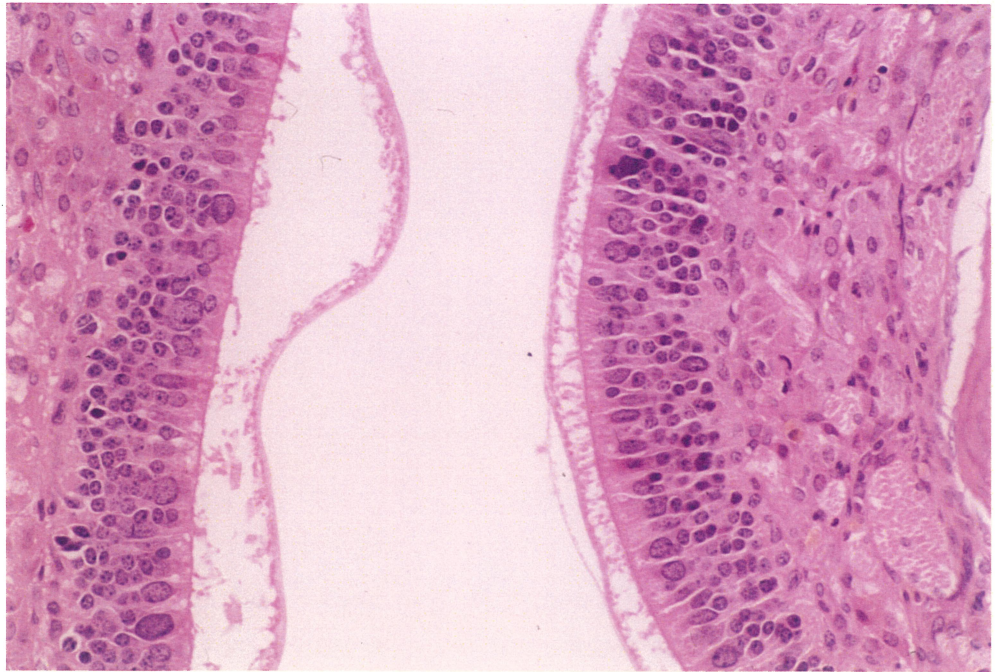
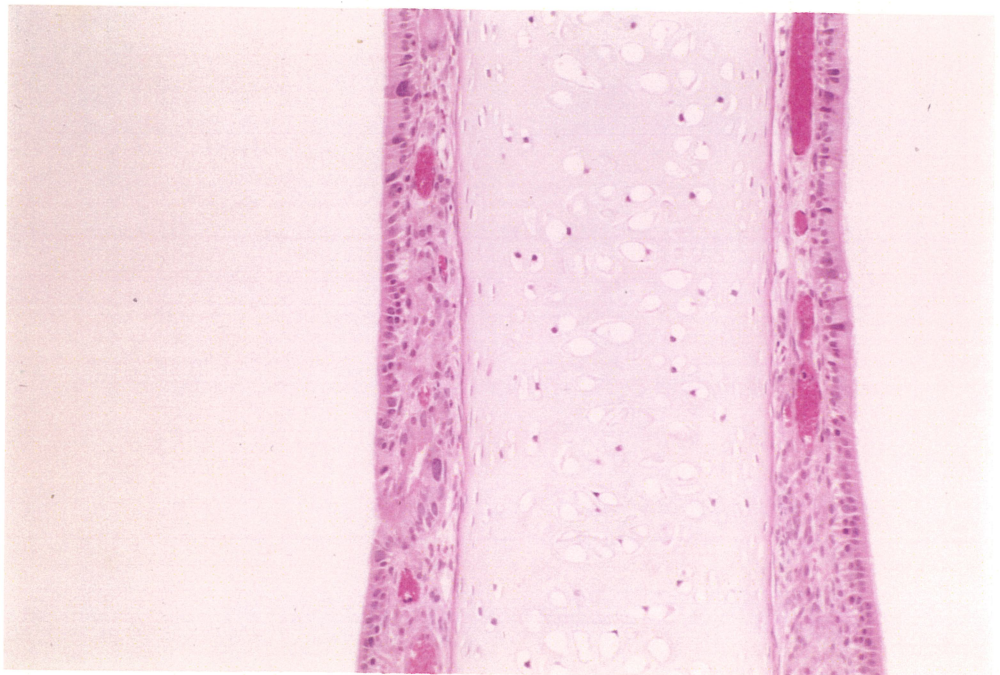


1, 4-ジオキサンの  
ラット及びマウスを用いた  
経口（混水）投与によるがん原性予備試験  
（急性・2週間・13週間）報告書

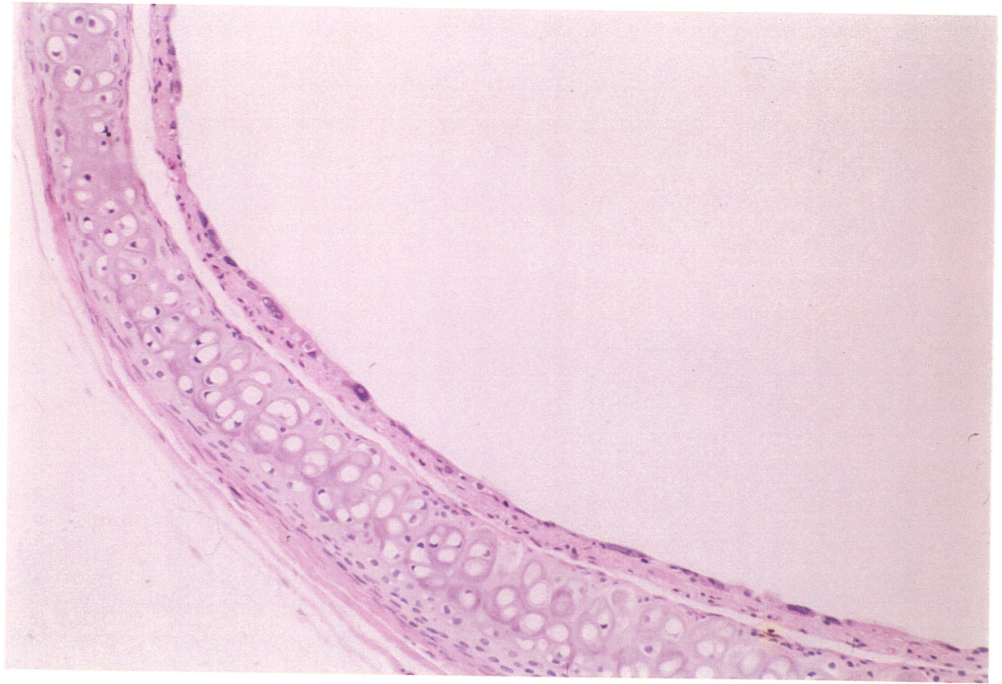
PHOTOGRAPHS



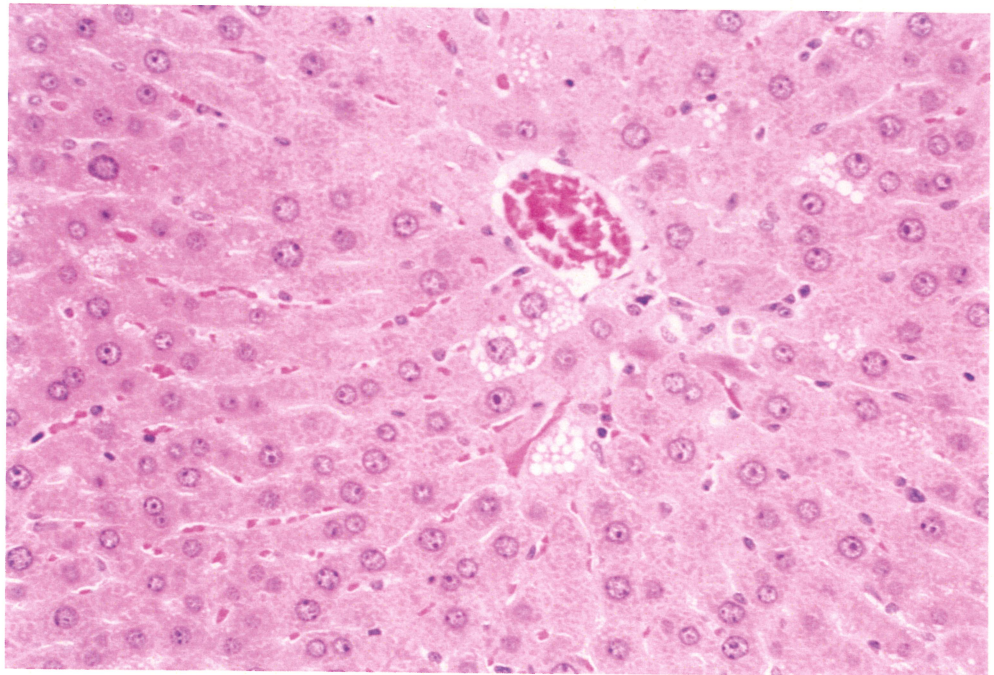
PHOTOGRAPH 1 NASAL CAVITY (LEVEL 3),  
NUCLEAR ENLARGEMENT:OLFACTORY EPITHELIUM SUPPORTING CELL  
RAT, MALE, 25000ppm, ANIMAL NO.0053-1506 (H.E., X300)



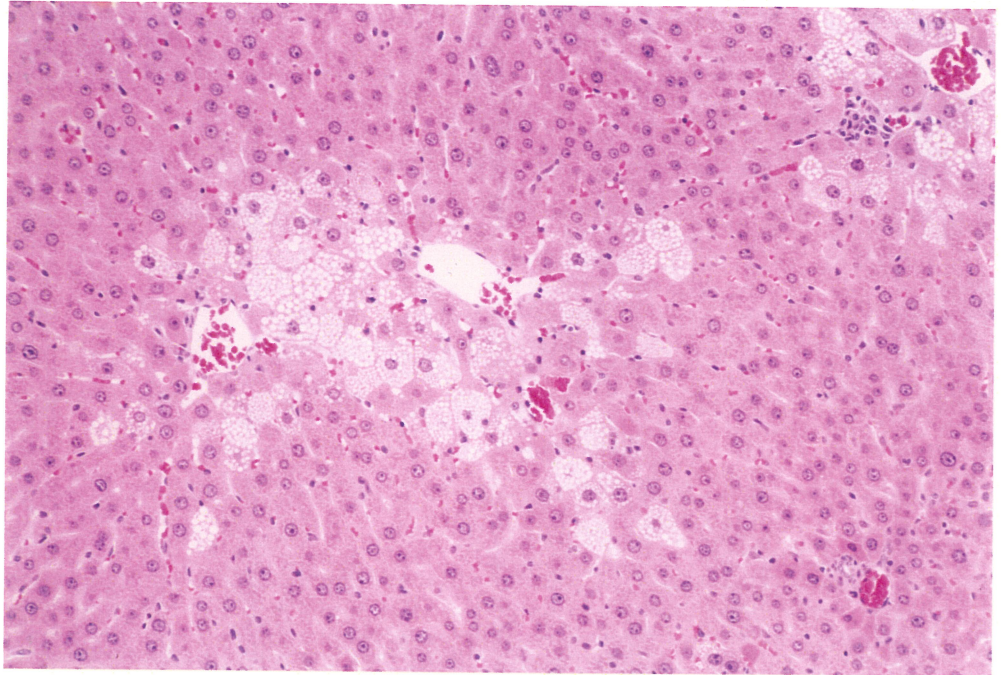
PHOTOGRAPH 2 NASAL CAVITY (LEVEL 2),  
NUCLEAR ENLARGEMENT:RESPIRATORY EPITHELIUM  
RAT, MALE, 25000ppm, ANIMAL NO.0053-1510 (H.E., X150)



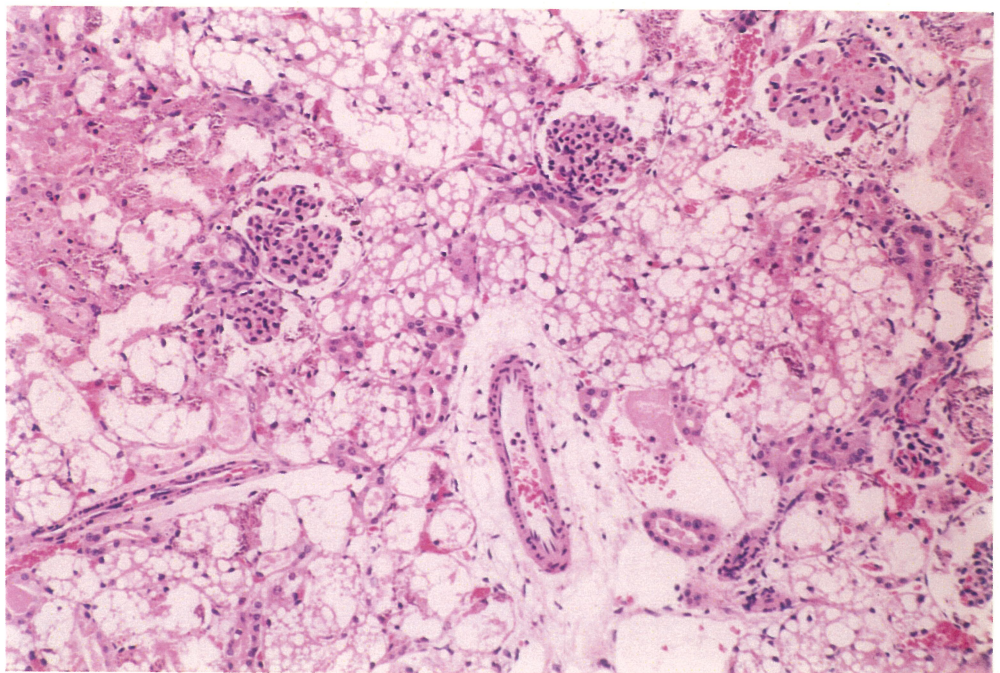
PHOTOGRAPH 3 TRACHEA  
NUCLEAR ENLARGEMENT: EPITHELIUM  
RAT, MALE, 25000ppm, ANIMAL NO.0053-1507 (H.E., X150)



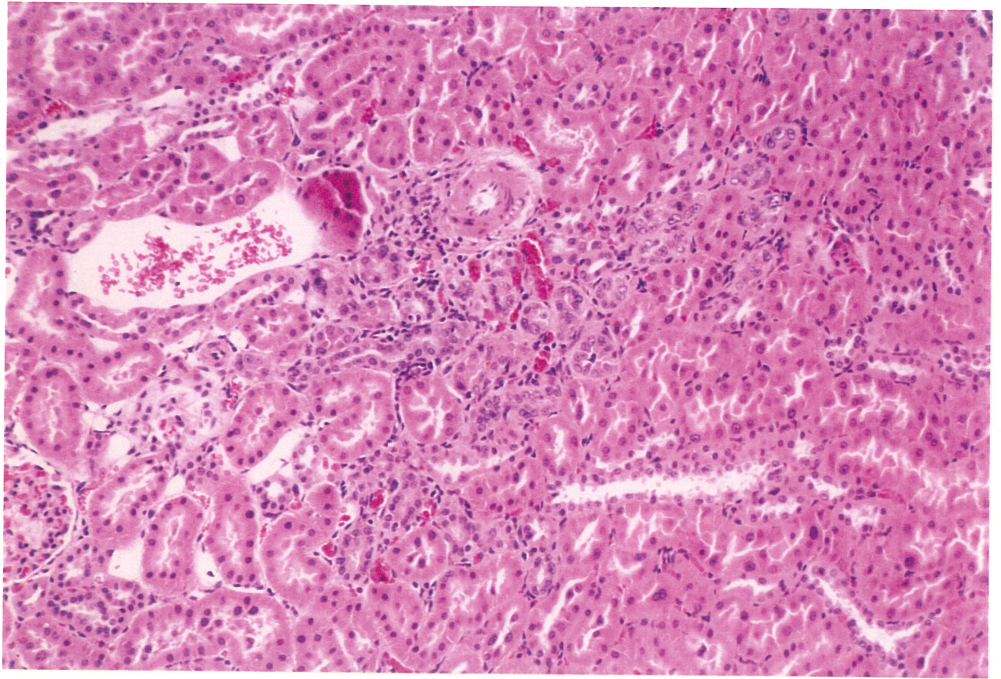
PHOTOGRAPH 4 LIVER  
SWELLING:CENTRAL  
RAT, FEMALE, 25000ppm, ANIMAL NO.0053-2506 (H.E., X300)



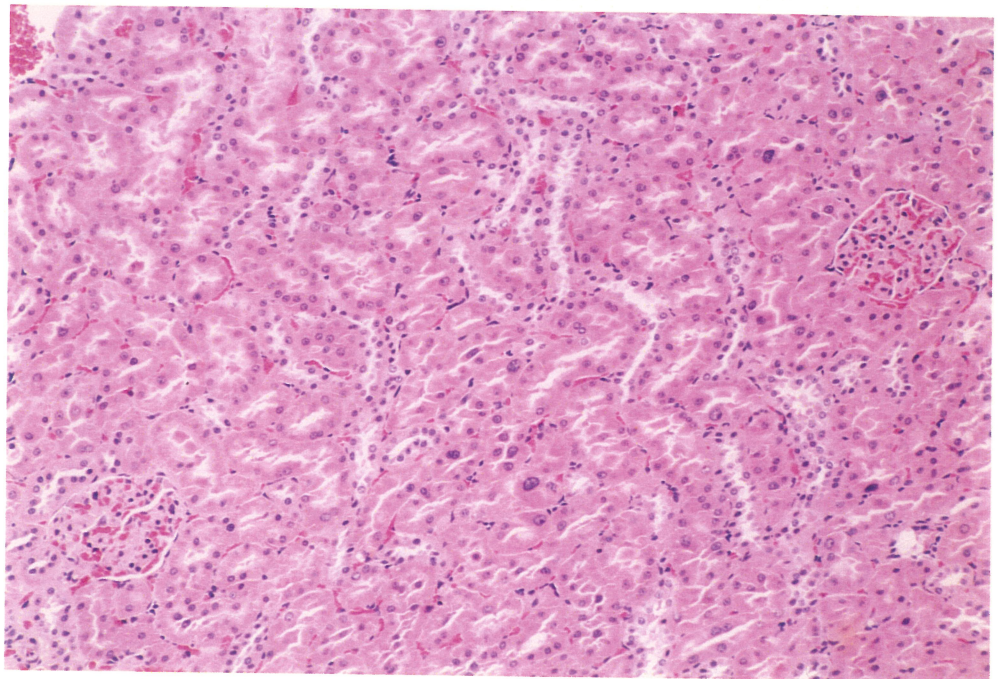
PHOTOGRAPH 5 LIVER  
VACUOLIC CHANGE:CENTRAL  
RAT, FEMALE, 25000ppm, ANIMAL NO.0053-2501 (H.E., X150)



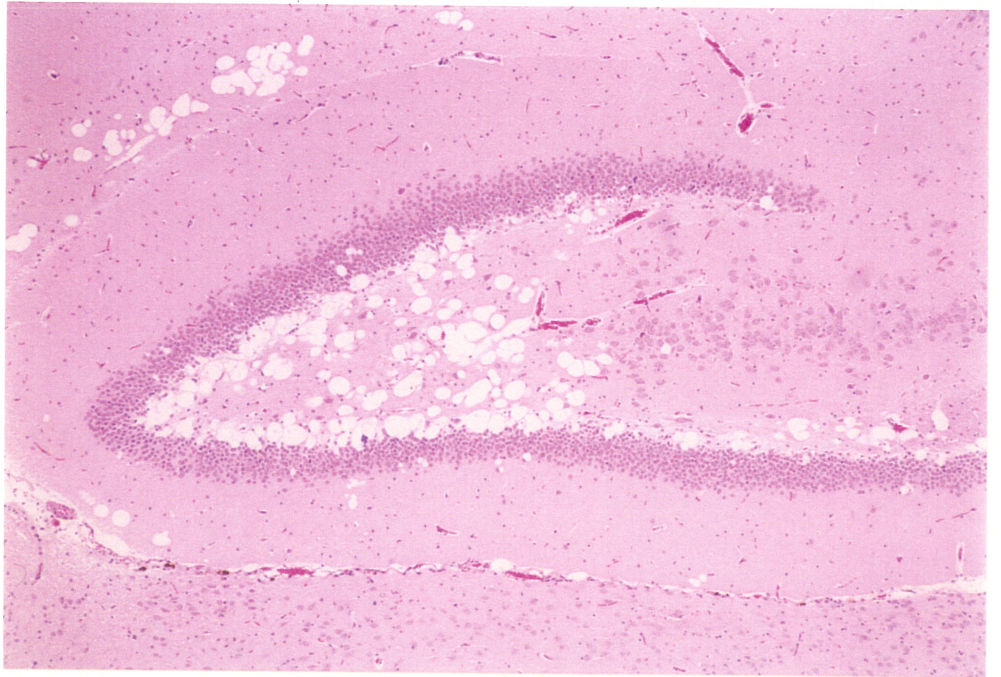
PHOTOGRAPH 6 KIDNEY  
HYDROPIC CHANGE:PROXIMAL TUBULE  
RAT, FEMALE, 5102mg/kg, ANIMAL NO.0003-2302 (H.E., X150)



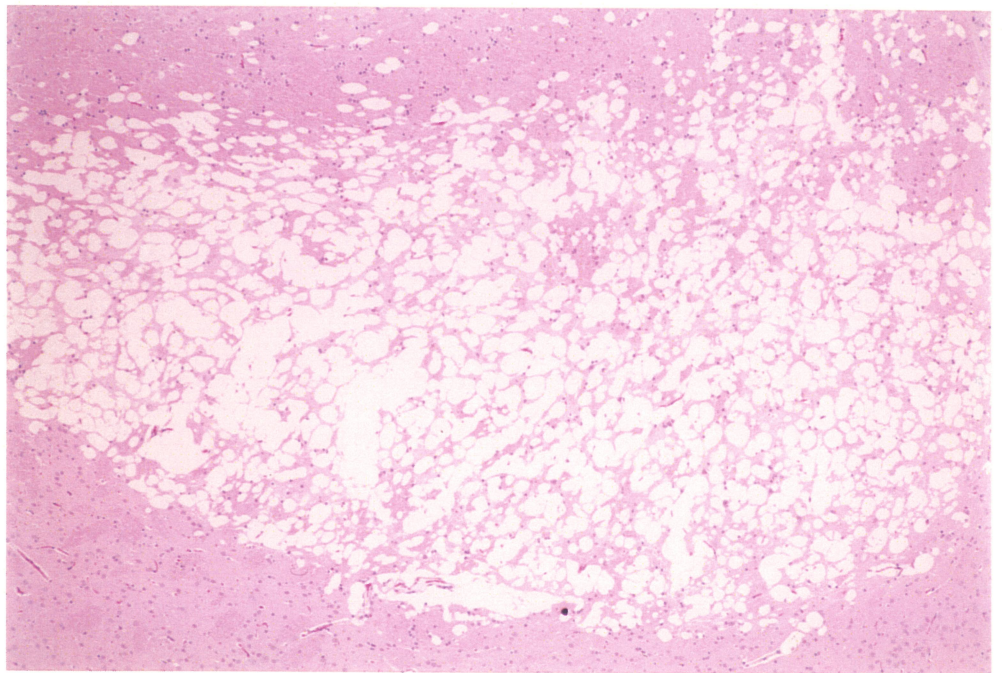
PHOTOGRAPH 7 KIDNEY  
REGENERATION:PROXIMAL TUBULE  
RAT, MALE, 25000ppm, ANIMAL NO.0053-1509 (H.E., X150)



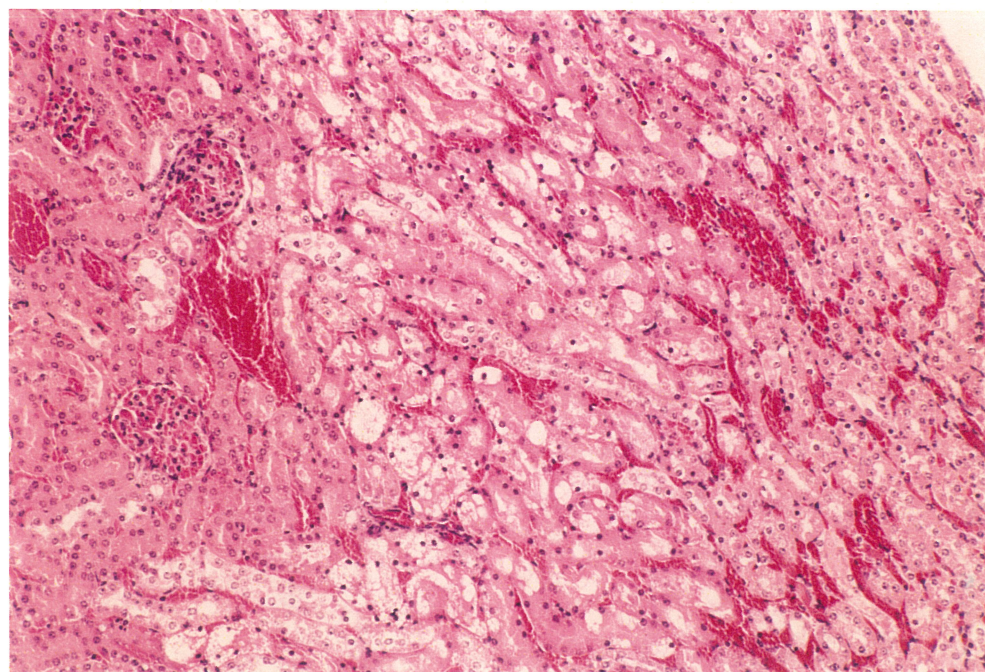
PHOTOGRAPH 8 KIDNEY  
NUCLEAR ENLARGEMENT:PROXIMAL TUBULE  
RAT, MALE, 25000ppm, ANIMAL NO.0053-1508 (H.E., X150)



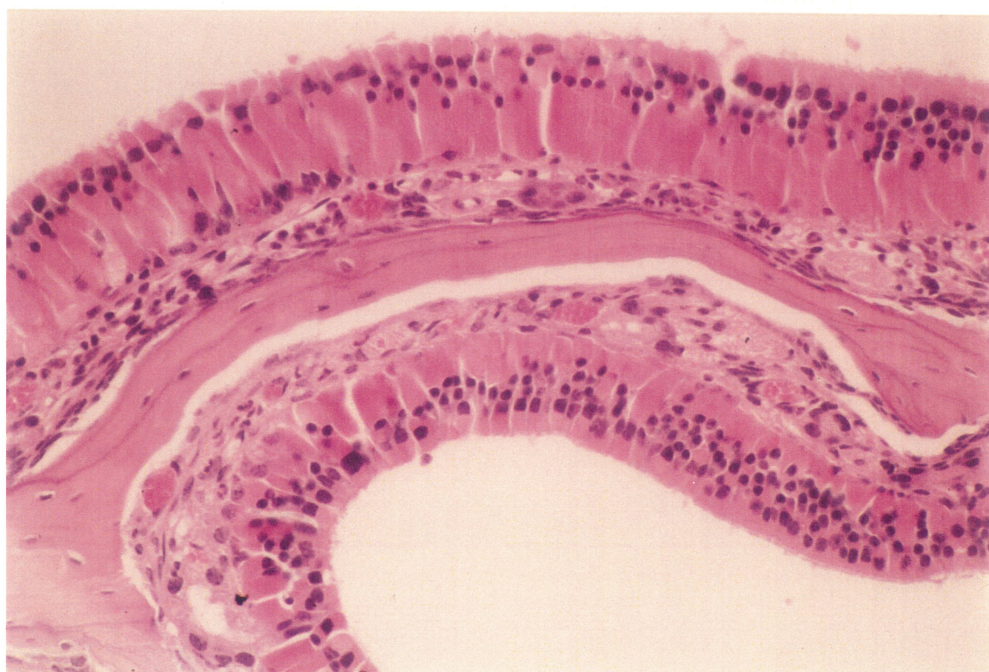
PHOTOGRAPH 9 BRAIN  
VACUOLIC CHANGE (HIPPOCAMPUS)  
RAT, MALE, 25000ppm, ANIMAL NO.0053-1507 (H.E., X60)



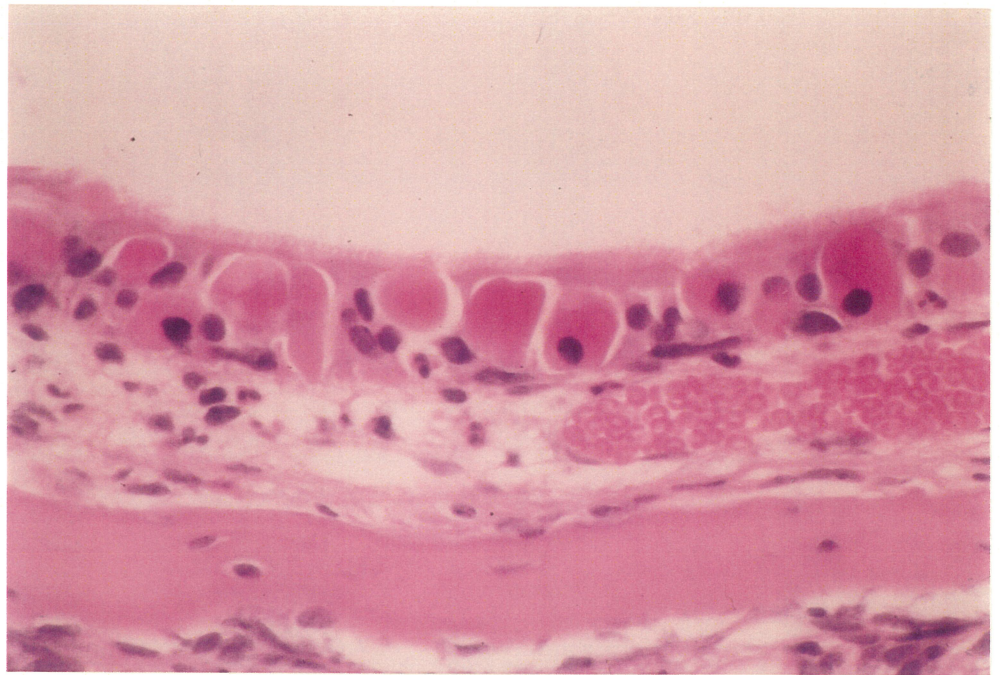
PHOTOGRAPH 10 BRAIN  
VACUOLIC CHANGE (THALAMUS)  
RAT, MALE, 25000ppm, ANIMAL NO.0053-1510 (H.E., X60)



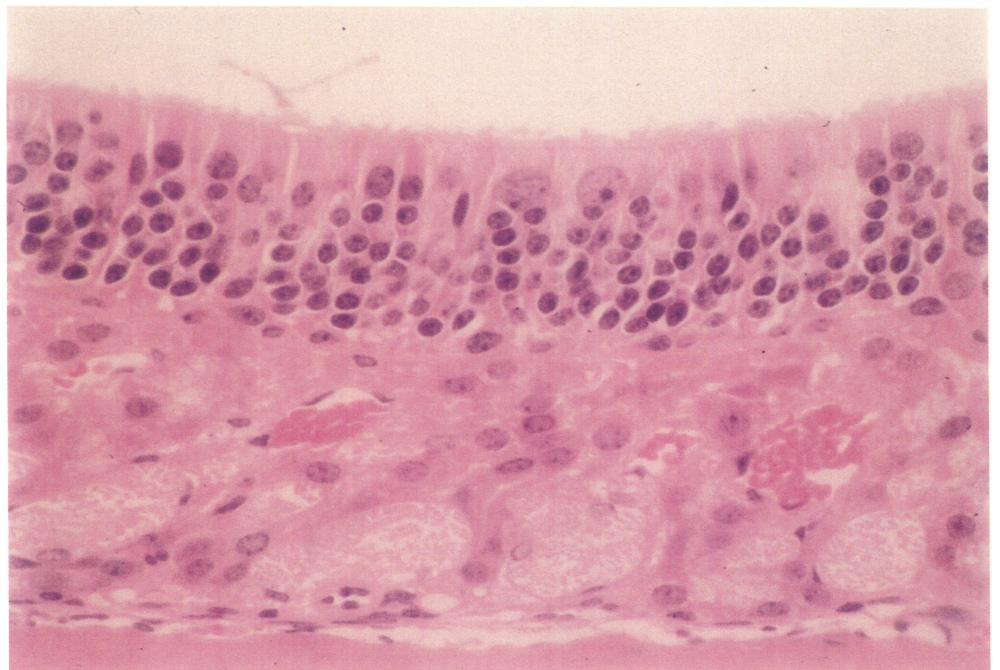
PHOTOGRAPH 11 KIDNEY  
TUBULAR NECROSIS:CORTICO-MEDULLARY JUNCTION  
MOUSE, FEMALE, 6923mg/kg, ANIMAL NO.0004-2409(H.E.,X150)



PHOTOGRAPH 12 NASAL CAVITY(LEVEL 3)  
EOSINOPHILIC CHANGE:OLFACTORY EPITHELIUM  
MOUSE, FEMALE, 25000ppm, ANIMAL NO.0054-2506(H.E.,X300)

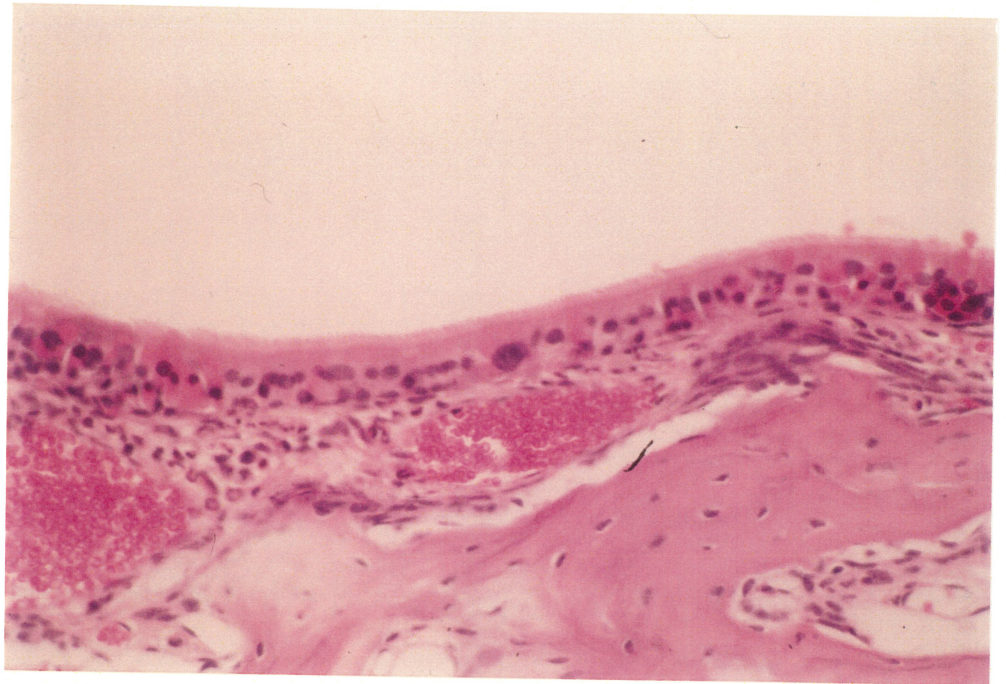


PHOTOGRAPH 13 NASAL CAVITY(LEVEL 3)  
EOSINOPHILIC CHANGE:RESPIRATORY EPITHELIUM  
MOUSE, FEMALE, 25000ppm, ANIMAL NO.0054-2506(H.E.,X600)

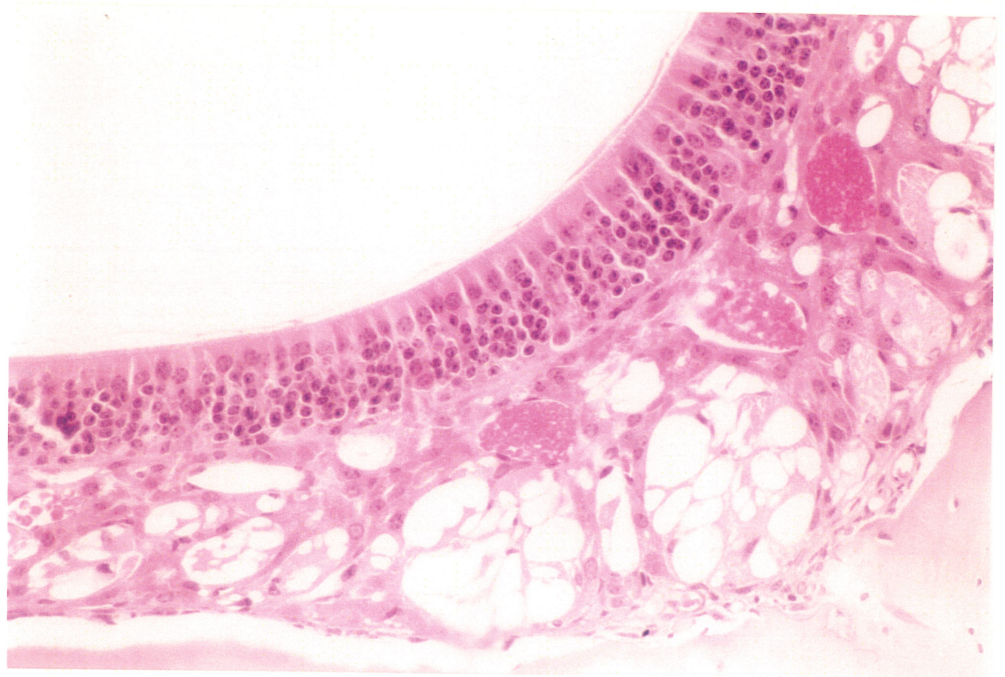


PHOTOGRAPH 14 NASAL CAVITY(LEVEL 2)  
NUCLEAR ENLARGEMENT:OLFACTORY EPITHELIUM  
MOUSE, MALE, 25000ppm, ANIMAL NO.0054-1502(H.E.,X600)

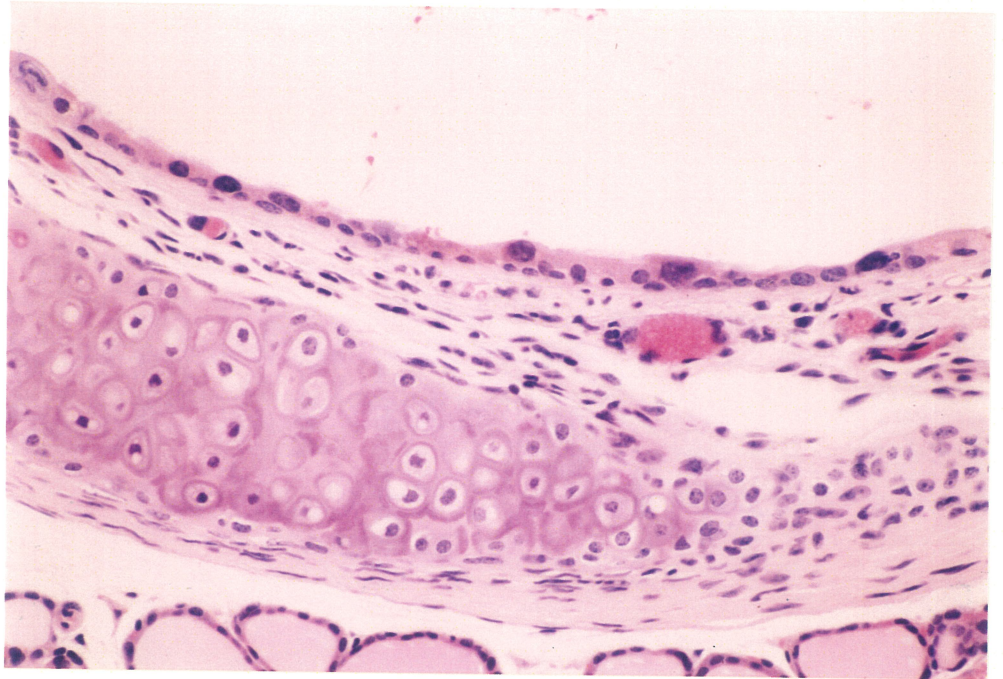




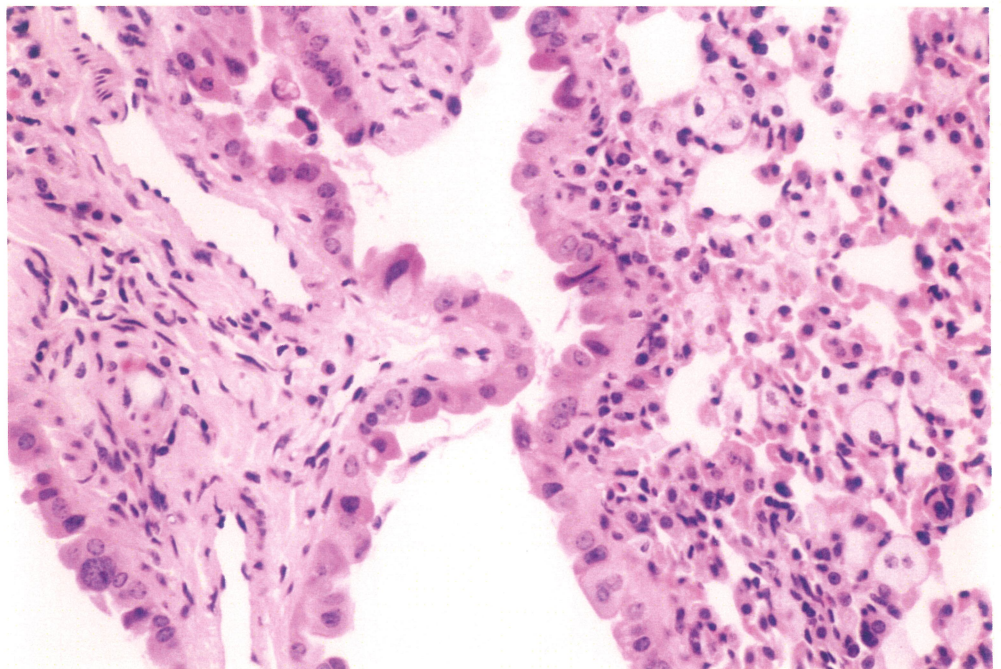
PHOTOGRAPH 15 NASAL CAVITY(LEVEL 2)  
NUCLEAR ENLARGEMENT:RESPIRATORY EPITHELIUM  
MOUSE, FEMALE, 25000ppm, ANIMAL NO.0054-2506(H.E.,X300)



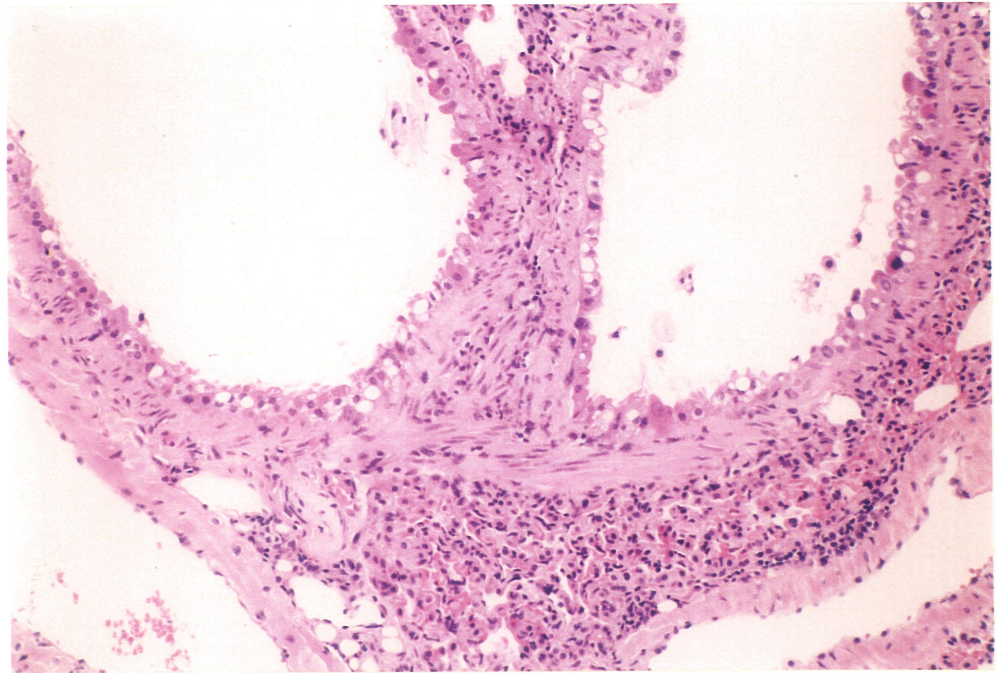
PHOTOGRAPH 16 NASAL CAVITY(LEVEL 2)  
VACUOLIC CHANGE:OLFACTORY NERVE  
MOUSE, FEMALE, 25000ppm, ANIMAL NO.0054-2506(H.E.,X300)



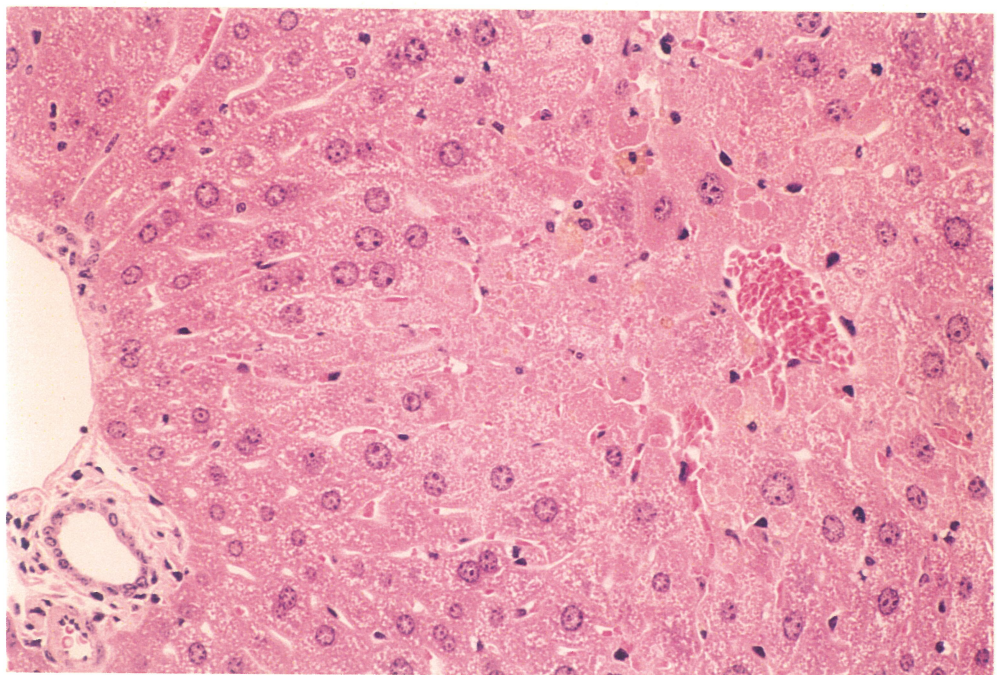
PHOTOGRAPH 17 TRACHEA  
NUCLEAR ENLARGEMENT:EPITHELIUM  
MOUSE, FEMALE, 25000ppm, ANIMAL NO.0054-2504(H.E.,X300)



PHOTOGRAPH 18 LUNG/BRONCH  
ACCUMURATION OF FOAMY CELLS, NUCLEAR ENLARGEMENT:EPITHELIUM  
MOUSE, FEMALE, 25000ppm, ANIMAL NO.0054-2504(H.E.,X300)



PHOTOGRAPH 19 LUNG/BRONCH  
DEGENERATION:BRONCHIAL EPITHELIUM  
MOUSE, FEMALE, 25000ppm, ANIMAL NO.0054-2504(H.E.,X150)



PHOTOGRAPH 20 LIVER  
NECROSIS:SINGLE CELL, SWELLING:CENTRAL  
MOUSE, MALE, 25000ppm, ANIMAL NO.0054-1509(H.E.,X300)